

# Academic Affairs visioning retreat

Jose Herrera, Ph.D.

Provost and Executive Vice President for Academic Affairs

University of Northern Iowa

# Where should we be headed?

We should have anchoring values that serve our communities. These values should be expressed in our vision and mission statements

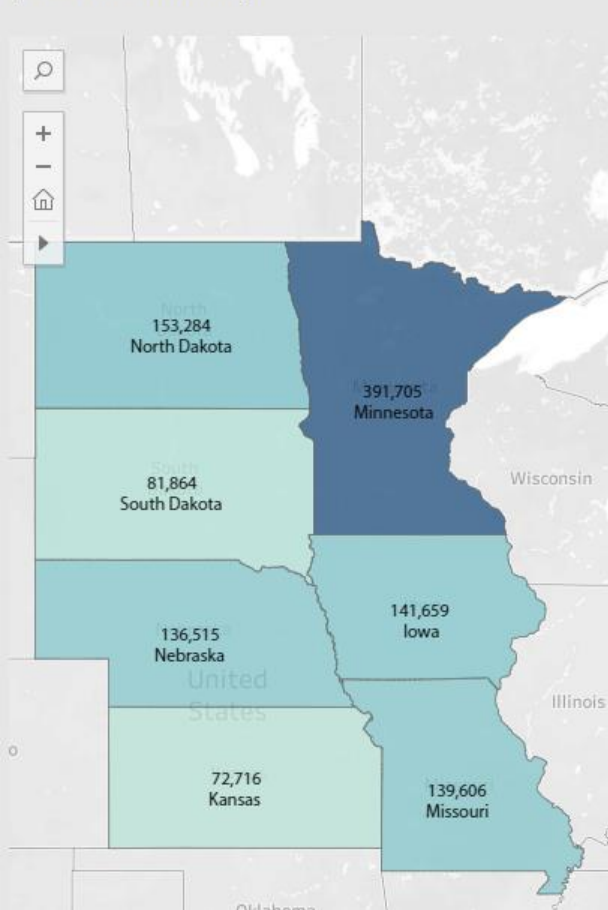
**In our current mission:** Creates, empowers and *innovates* to enrich Iowa and beyond

**In our current vision:** Serve public good through equitable and inclusive excellence in teaching, learning, scholarship and service

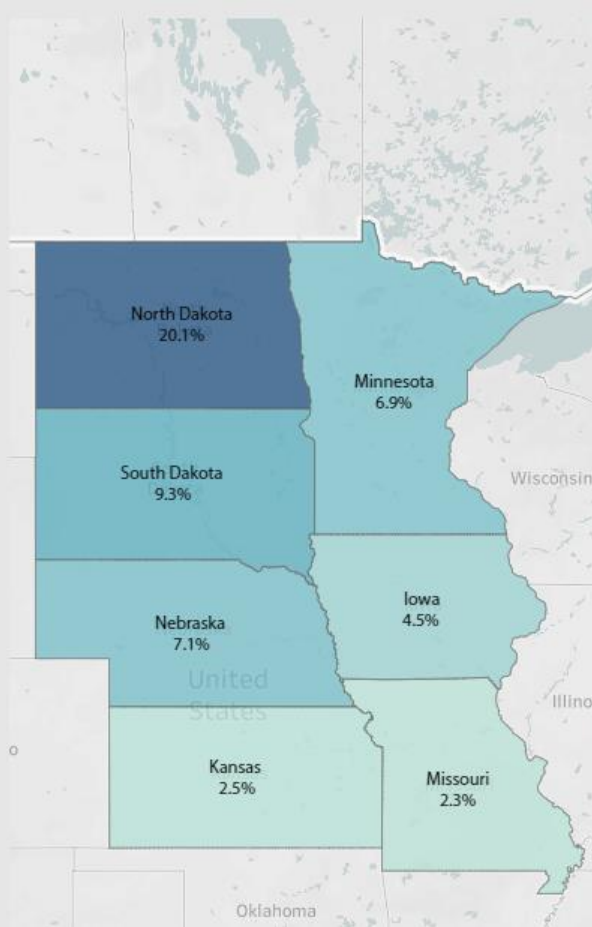
**Values:** Academic Freedom, Access, Integrity, Collaboration, Community, Equity, Empowerment, Excellence, Sustainability

# Projected change in census for Midwest basin (2019 – 2030)

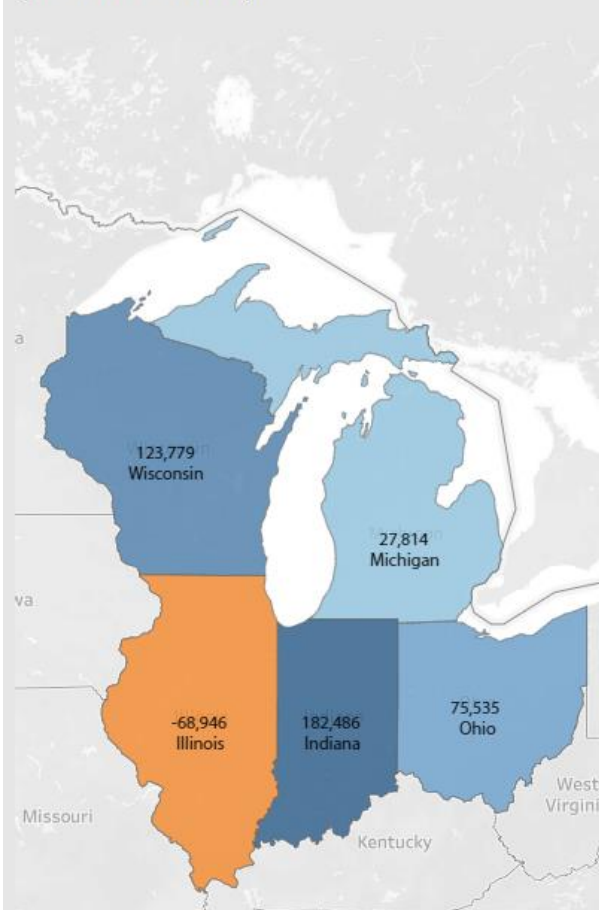
Map: State Race Absolute Change 2019-2030:  
**West North Central- All**  
(Medium Scenario)



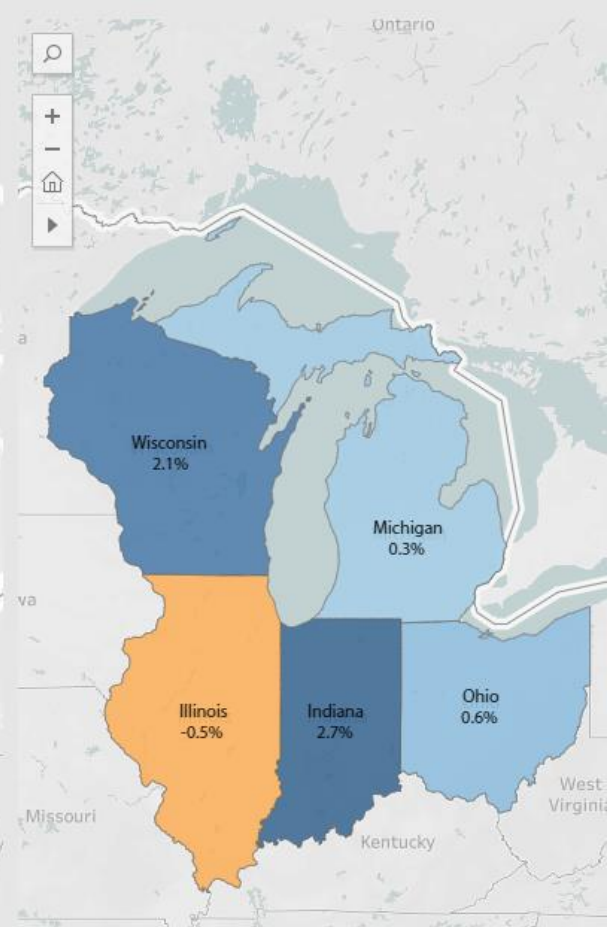
Map: State Race % Change 2019-2030:  
**West North Central- All**  
(Medium Scenario)



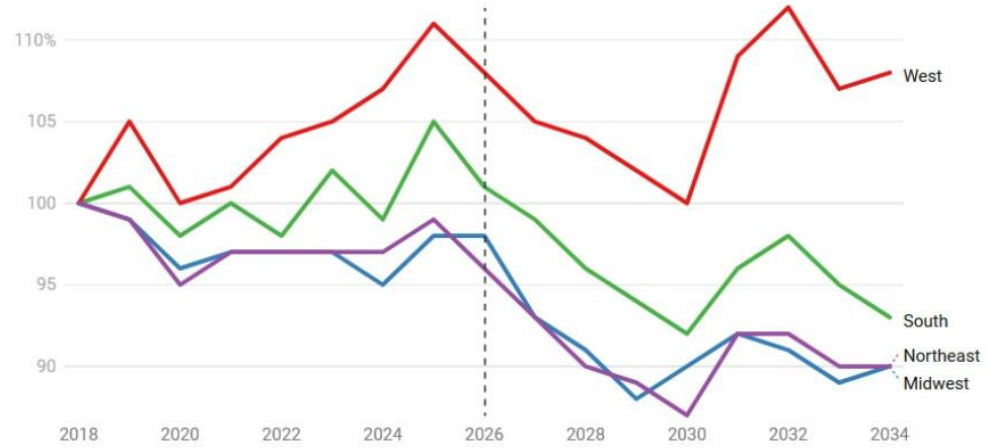
Map: State Race Absolute Change 2019-2030:  
**East North Central- All**  
(Medium Scenario)



Map: State Race % Change 2019-2030:  
**East North Central- All**  
(Medium Scenario)

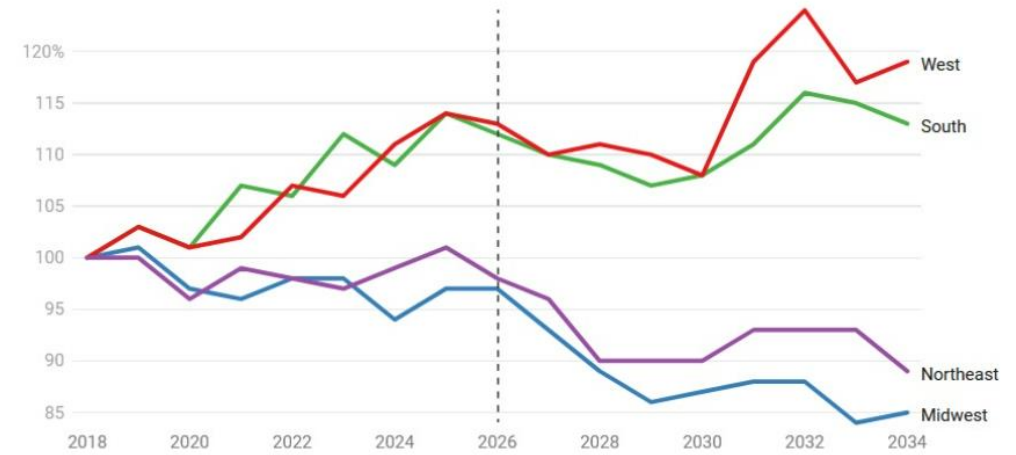


### 4-Year Regional Colleges

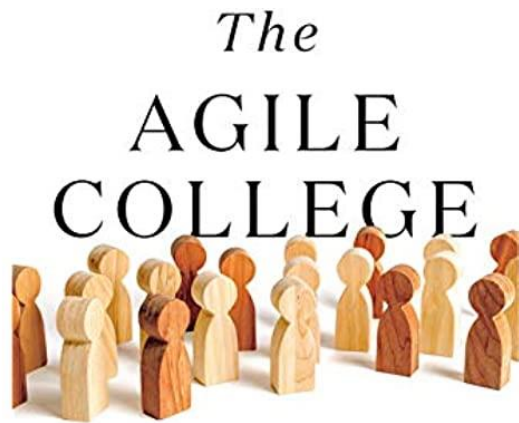


Source: Nathan D. Grawe, "The Agile College" • Get the data • Created with Datawrapper

### 4-Year National Colleges



Source: Nathan D. Grawe, "The Agile College" • Get the data • Created with Datawrapper



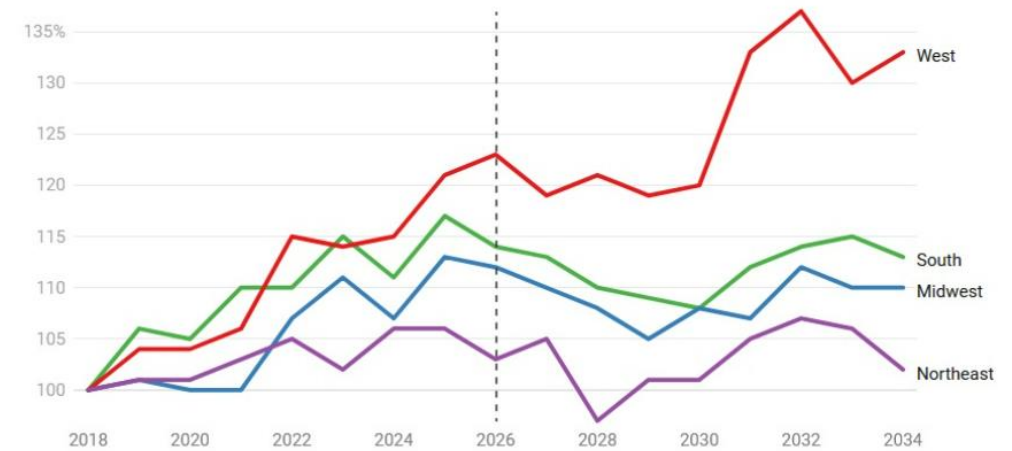
HOW INSTITUTIONS SUCCESSFULLY NAVIGATE  
DEMOGRAPHIC CHANGES

© 2021

NATHAN D. GRAWE

AUTHOR OF DEMOGRAPHICS AND THE DEMAND FOR HIGHER EDUCATION

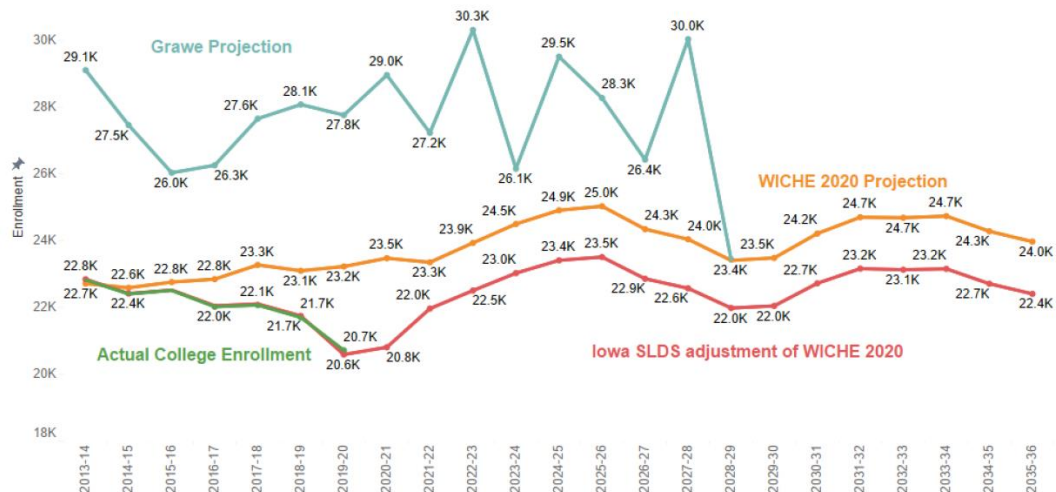
### 4-Year Elite Colleges



Source: Nathan D. Grawe, "The Agile College" • Get the data • Created with Datawrapper

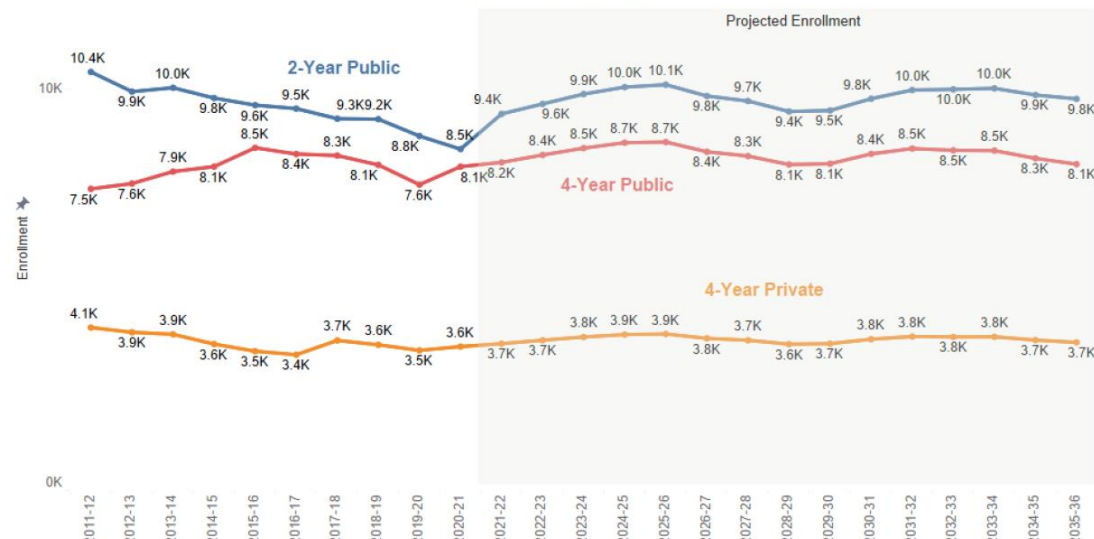
# Projections are varied and are impacted by workforce decisions

**Predicted Counts of Iowa High School Graduates Enrolling in Any College**  
2013-14 to 2035-36



Sources: Nathan Grawe, *Demographics and the Demand for Higher Education*; WICHE 2020 *Knocking on the College Door*; Iowa Statewide Longitudinal Data System

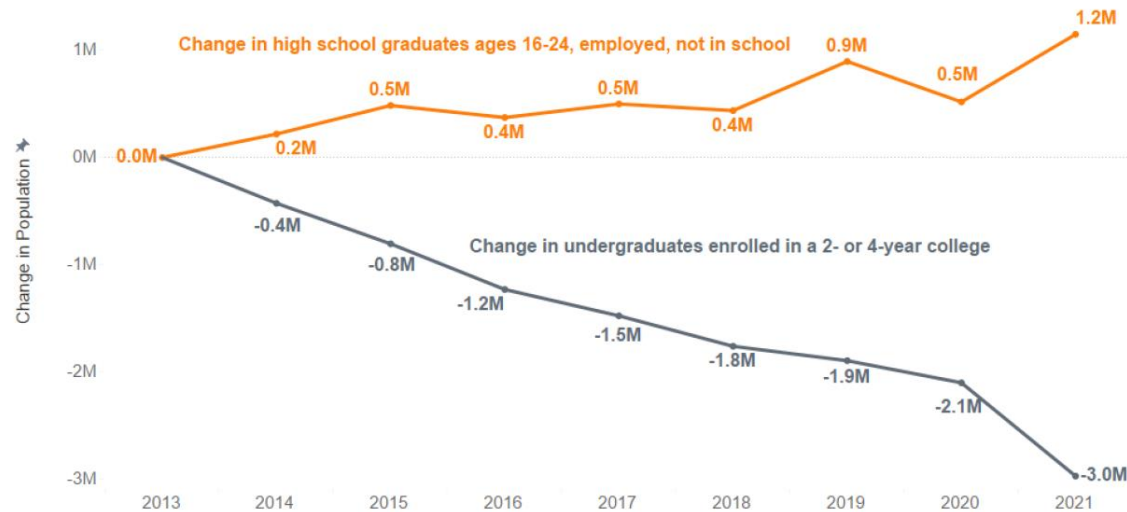
**Actual and Projected Enrollment of Iowa Public High School Graduates by Institutional Type**  
2011-12 to 2035-36



Source: 2020 WICHE *Knocking on the College Door* projections adjusted by Iowa SLDS College-going rates by institutional type

Iowa Coordinating Council for Post-High School Education  
October 27, 2022  
Jason Pontius, Iowa Board of Regents

**National Trend: High School Graduates Entering the Workforce and Total College Enrollment, 2013-2021**



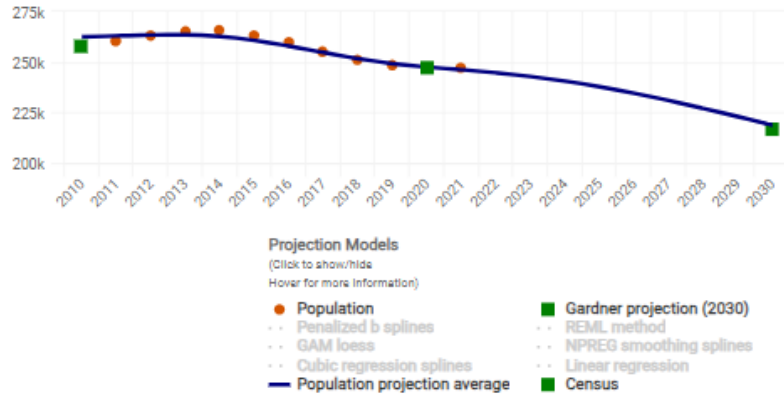
Sources: Integrated Postsecondary Education Data System (IPEDS) Undergraduate enrollment at Title IV colleges offering a 2 or 4 year degree & Bureau of Labor Statistics, Table 2.

# Projected Iowa demographics for 18-24 year-olds

## White

This chart shows the historical and projected population of White, male and female, 18 - 24 year olds. The population projection is an average of various regression methods applied to historical data to project change out to 2030.

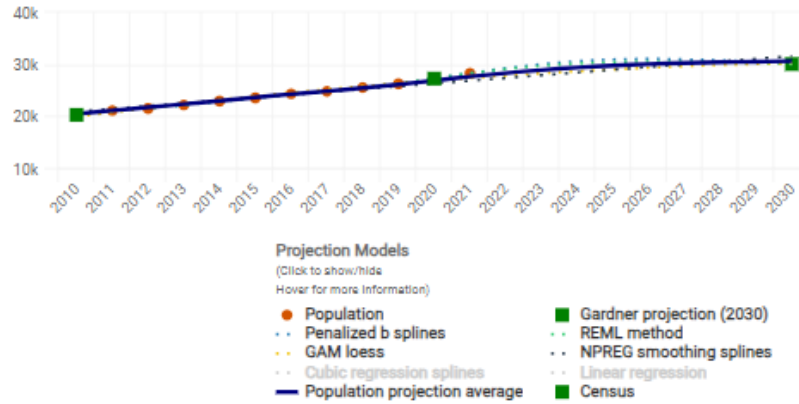
Population Projection for Iowa



## Hispanic

This chart shows the historical and projected population of Hispanic, male and female, 18 - 24 year olds. The population projection is an average of various regression methods applied to historical data to project change out to 2030.

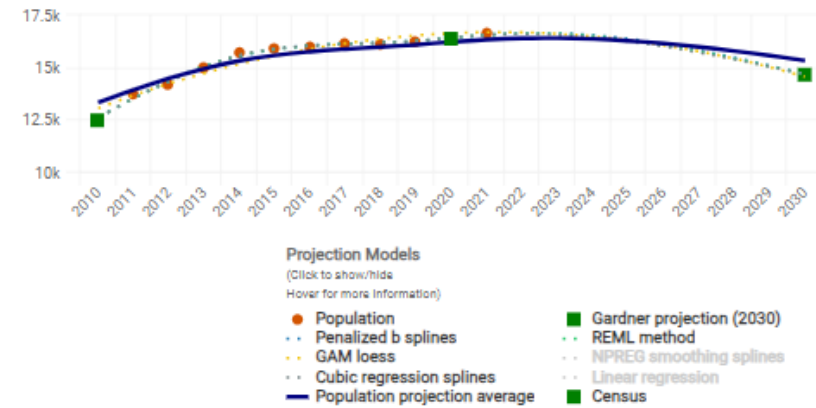
Population Projection for Iowa



## Black

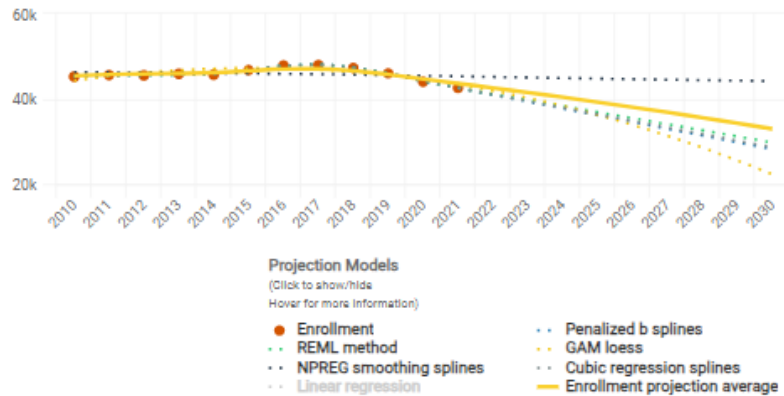
This chart shows the historical and projected population of Black, male and female, 18 - 24 year olds. The population projection is an average of various regression methods applied to historical data to project change out to 2030.

Population Projection for Iowa



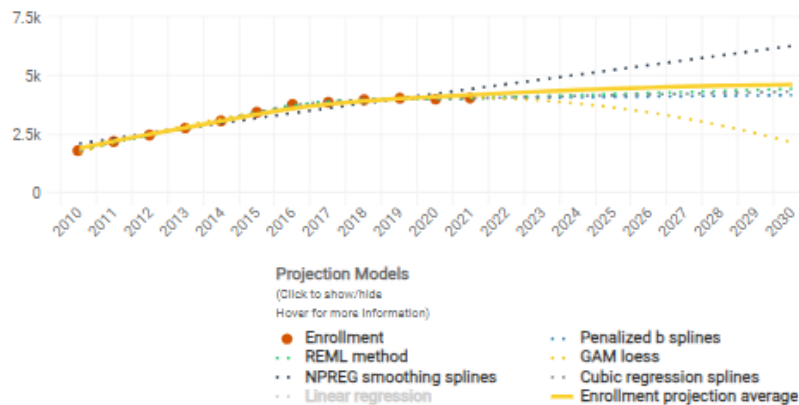
This chart shows the White, male and female, enrolled students (all ages) for the Public, 4-year or above sector in Iowa. The enrollment projection is an average of various regression methods applied to historical data to project change out to 2030.

Enrollment Projection for Iowa



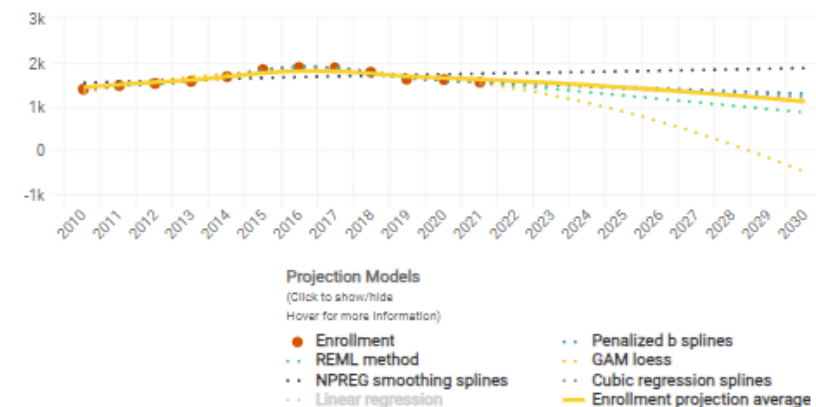
This chart shows the Hispanic, male and female, enrolled students (all ages) for the Public, 4-year or above sector in Iowa. The enrollment projection is an average of various regression methods applied to historical data to project change out to 2030.

Enrollment Projection for Iowa



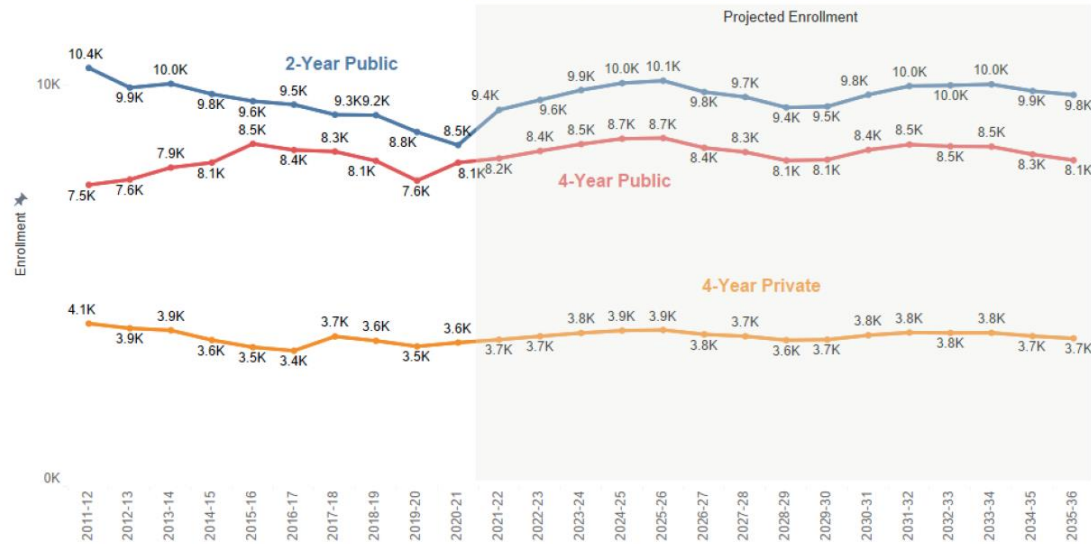
This chart shows the Black, male and female, enrolled students (all ages) for the Public, 4-year or above sector in Iowa. The enrollment projection is an average of various regression methods applied to historical data to project change out to 2030.

Enrollment Projection for Iowa



# Should we prepare for the 2026 enrollment cliff?

Actual and Projected Enrollment of Iowa Public High School Graduates by Institutional Type  
2011-12 to 2035-36

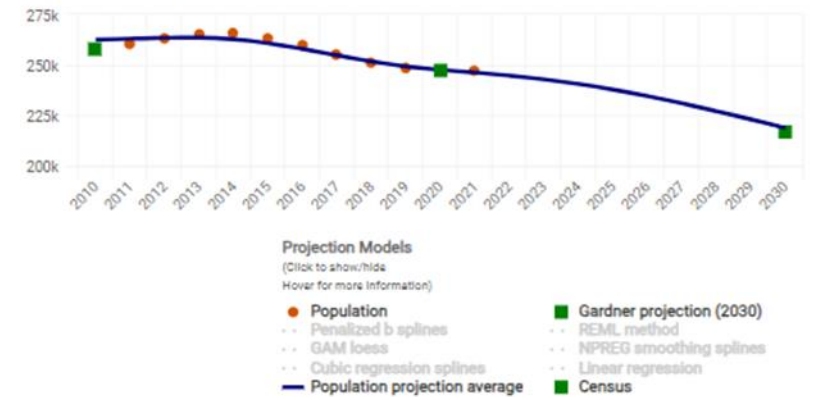


Source: 2020 WICHE Knocking on the College Door projections adjusted by Iowa SLDS College-going rates by institutional type

## White

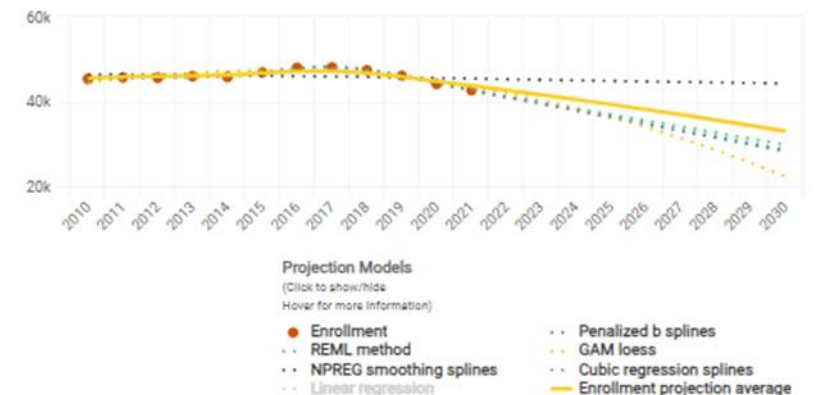
This chart shows the historical and projected population of White, male and female, 18 - 24 year olds. The population projection is an average of various regression methods applied to historical data to project change out to 2030.

Population Projection for Iowa



This chart shows the White, male and female, enrolled students (all ages) for the Public, 4-year or above sector in Iowa. The enrollment projection is an average of various regression methods applied to historical data to project change out to 2030.

Enrollment Projection for Iowa



Yes, but the “cliff” more likely a swale. More importantly, those high school graduates will increasingly differ in their:

- ethnicity
- excitement to attend college
- increased focus on career and career competencies
- financial standing to afford college
- demand for personalized, flexible education

# Where should we be headed based on enrollment, financial and political uncertainty?

*A dynamic, iterative, and shorter-term strategic planning, aligned with our anchored vision and mission.*

**In our current mission:** Creates, empowers and *innovates* to enrich Iowa and beyond

**In our current vision:** Serve public good through equitable and inclusive excellence in teaching, learning, scholarship and service.

**Values:** Academic Freedom, Access, Integrity, Collaboration, Community, Equity, Empowerment, Excellence, Sustainability



# Where should we be headed based on enrollment, financial and political uncertainty?

*A dynamic, iterative, and shorter-term strategic planning aligned with our anchored vision and mission.*

1. Maintain the long-term financial health of UNI
2. Be mindful and carefully respond to disruptions, threats and opportunities
3. Strategically select programs and initiatives that will improve student success, value proposition and diversify revenue streams
4. Understand, value and use our core functions to help improve learning and student success.
5. Iteratively reassess your goals on a monthly basis.