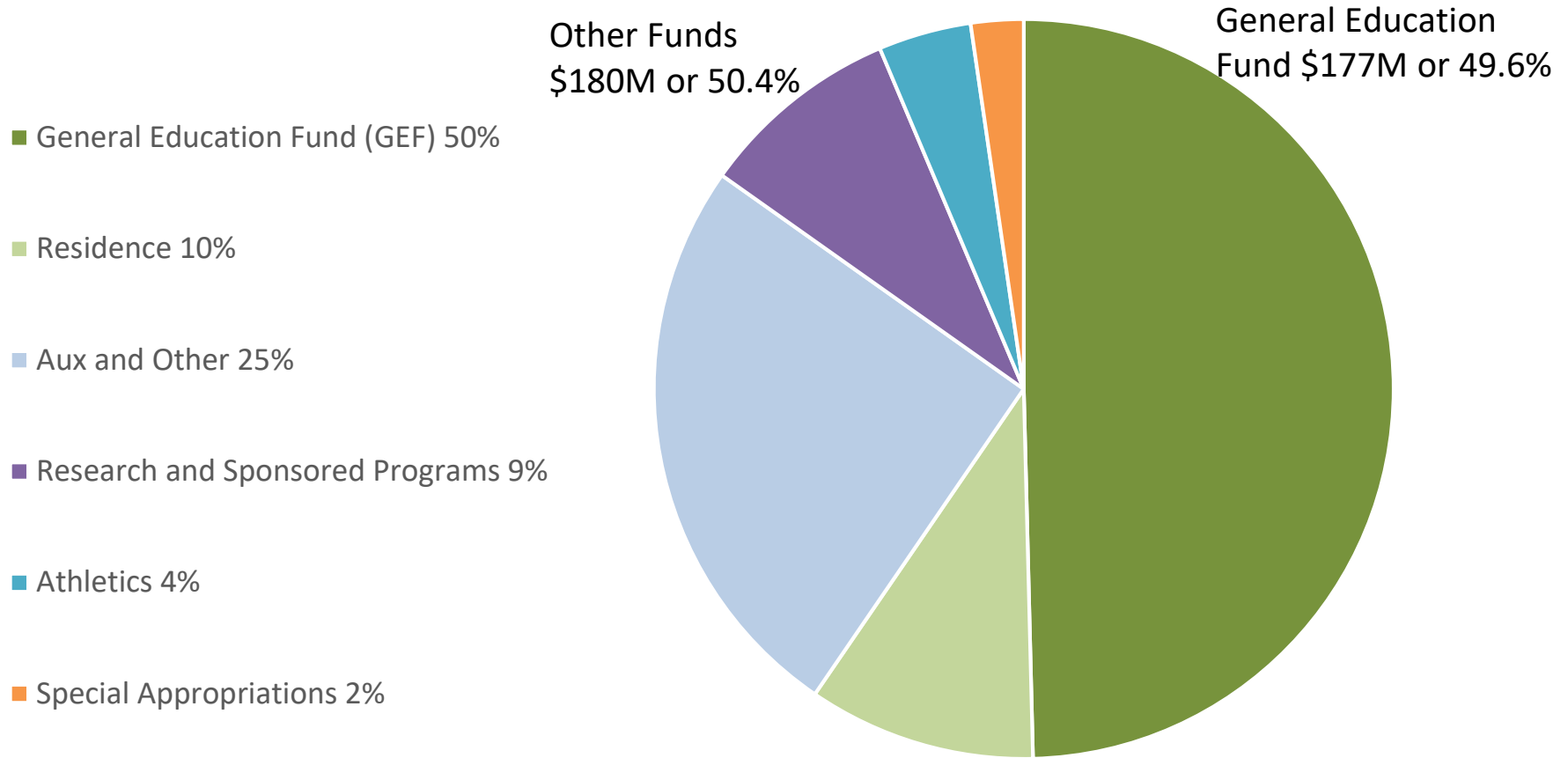


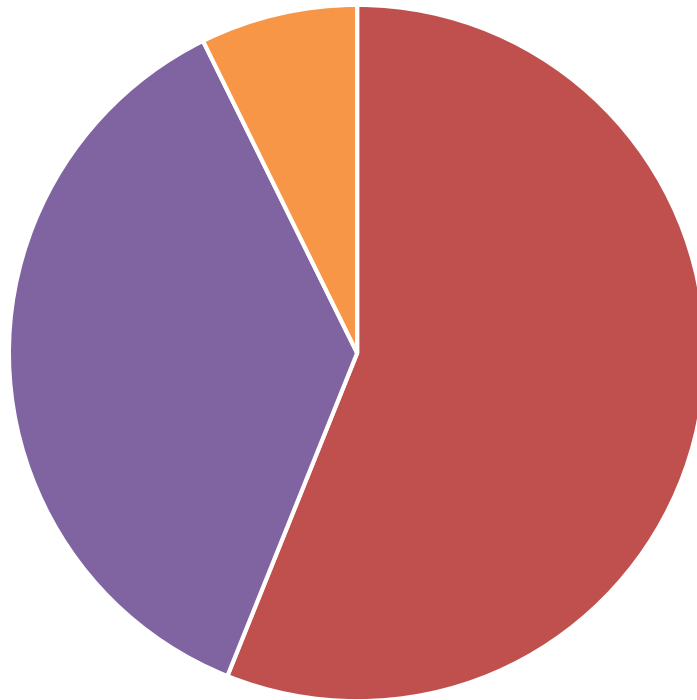
# Total FY2020 Budget Summary

All Funds = \$357 Million



# GEF FY2020 Budget - Revenue

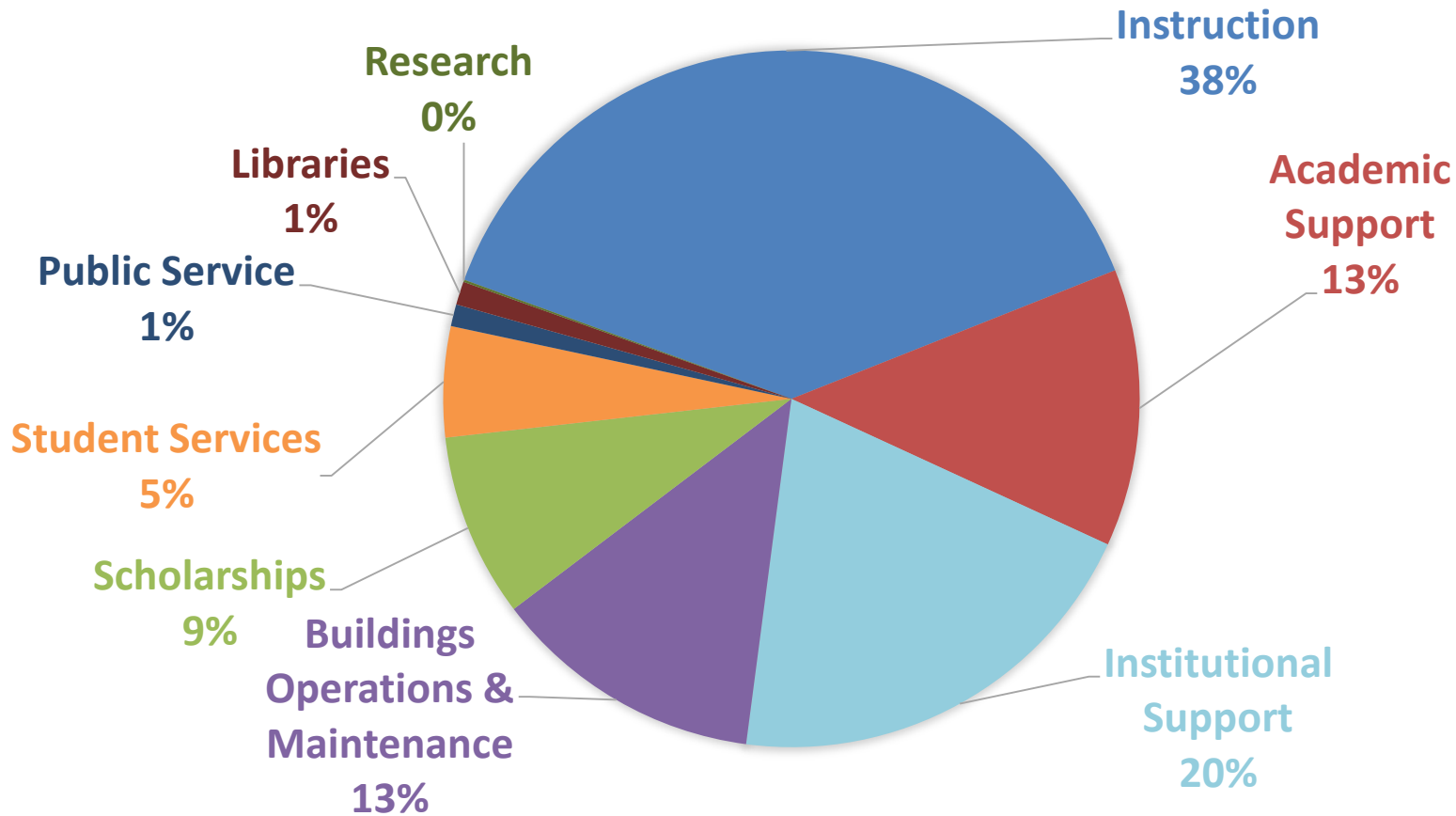
GEF Budget = \$177,012,053



- State Appropriations - 56%
- Resident Tuition - 35%
- Non-Resident Tuition - 7%

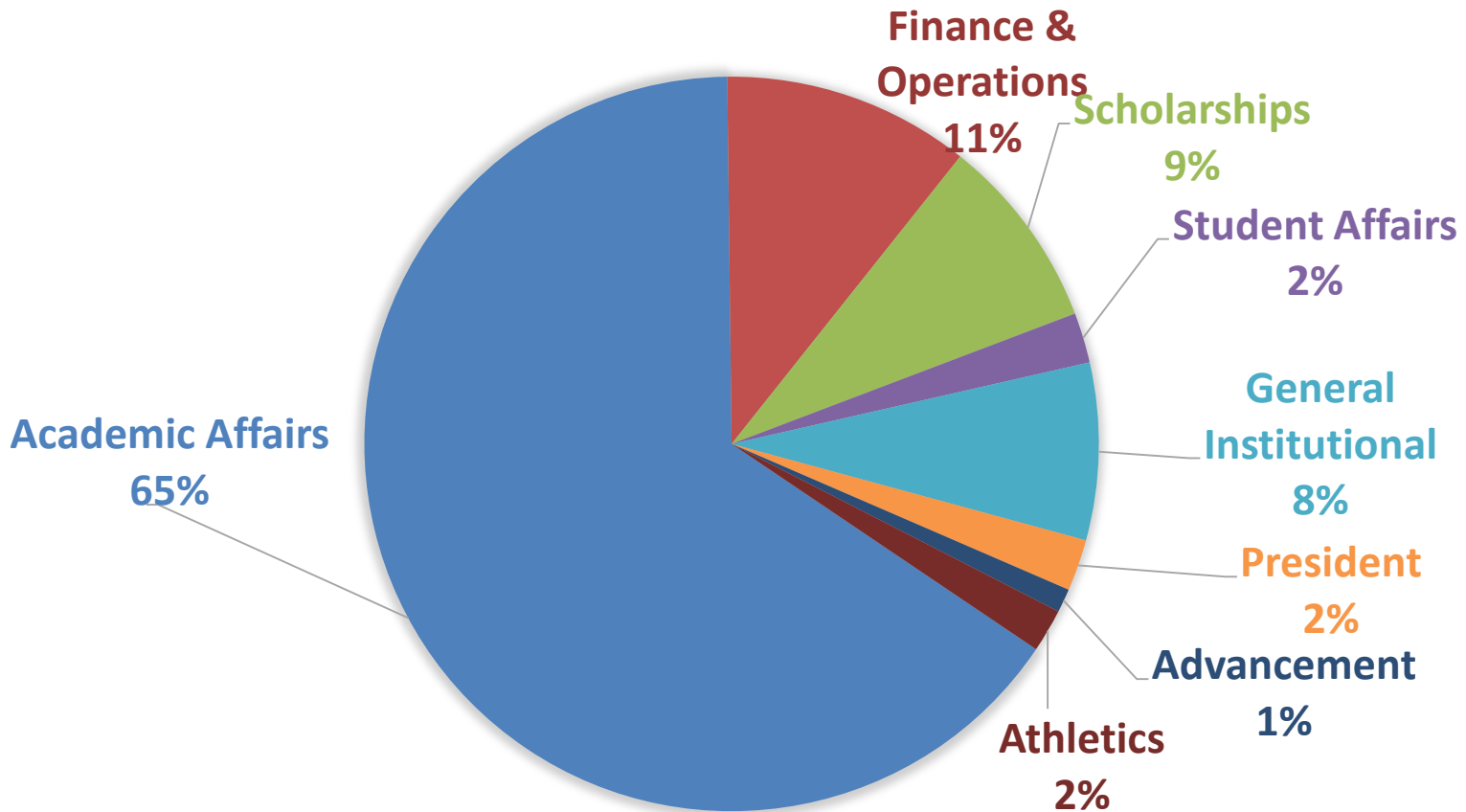
# GEF FY2020 Budget – Expenses by Function

GEF Budget = \$177,012,053

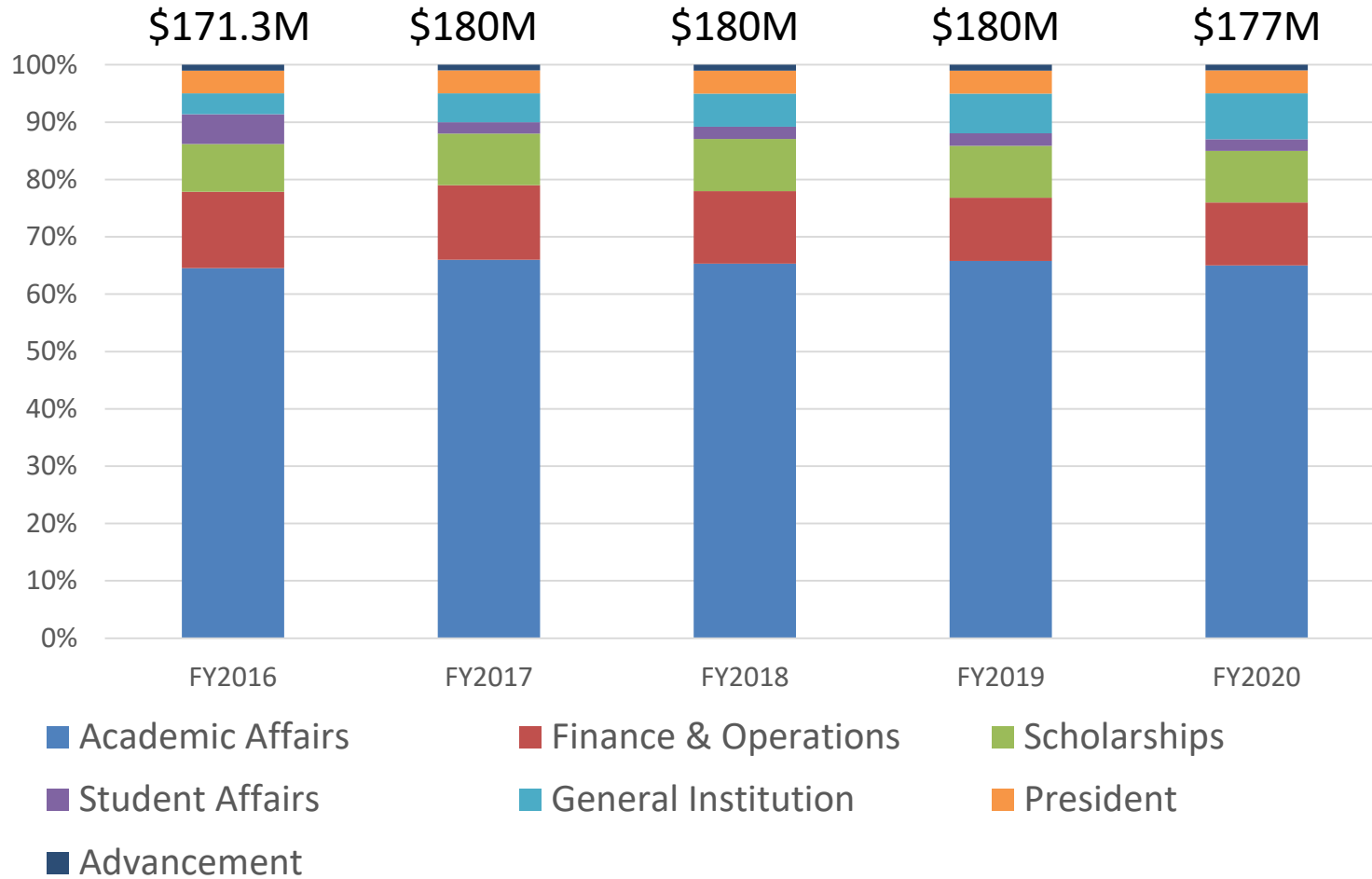


# GEF FY2020 Budget – Expenses by Division

GEF Budget = \$177,012,053

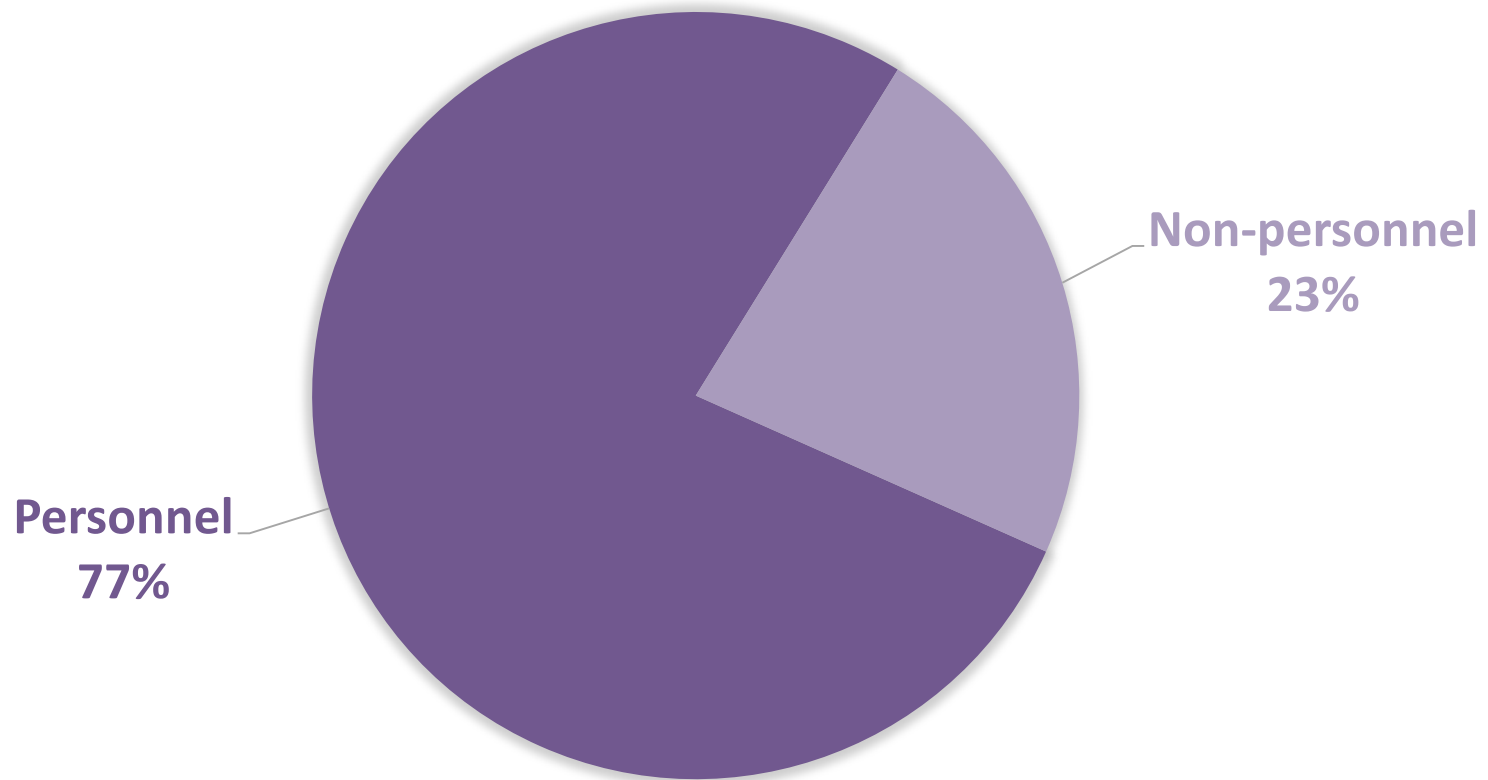


# GEF Budget – Expenses by division, 5 years



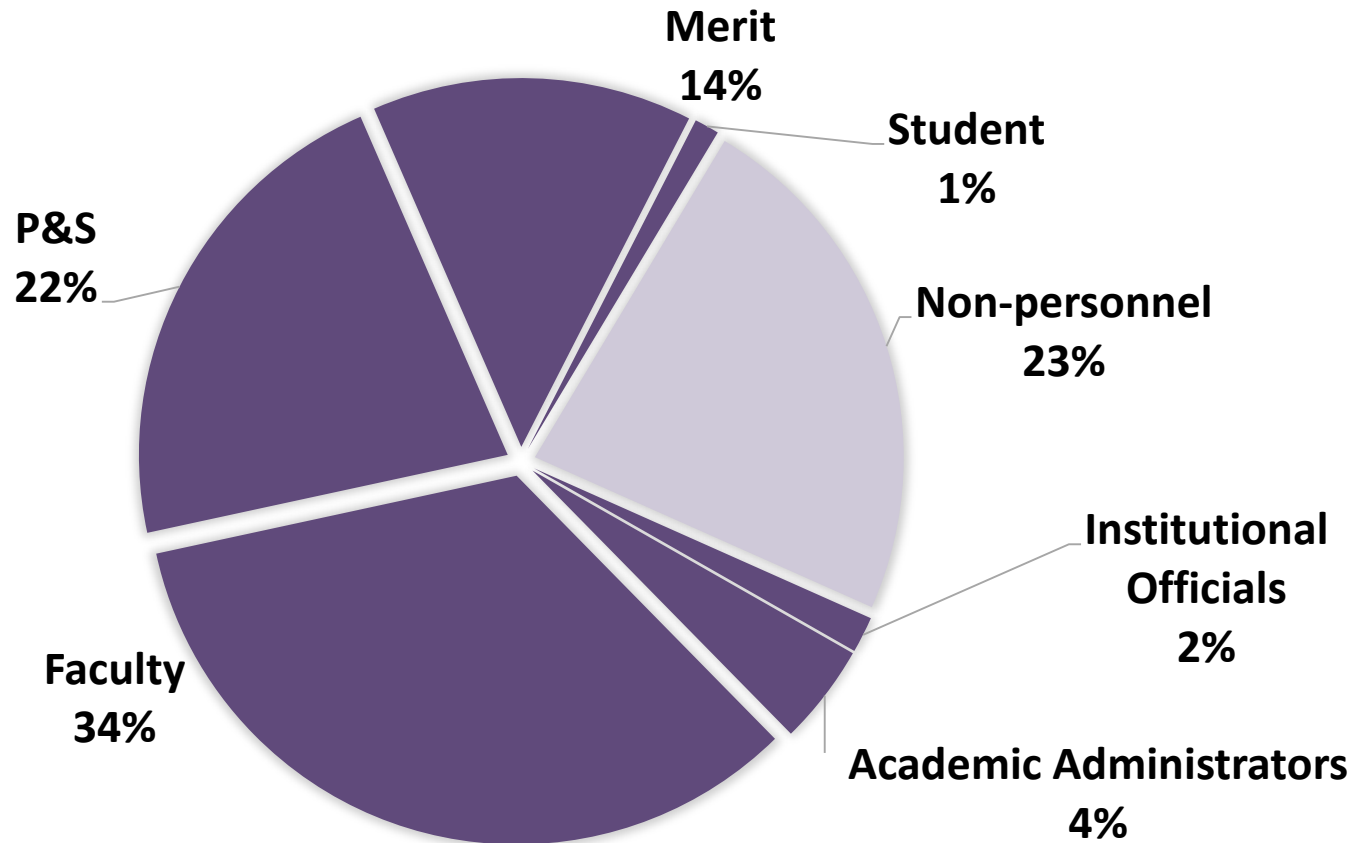
# GEF FY2020 Budget

GEF Budget = \$177,012,053



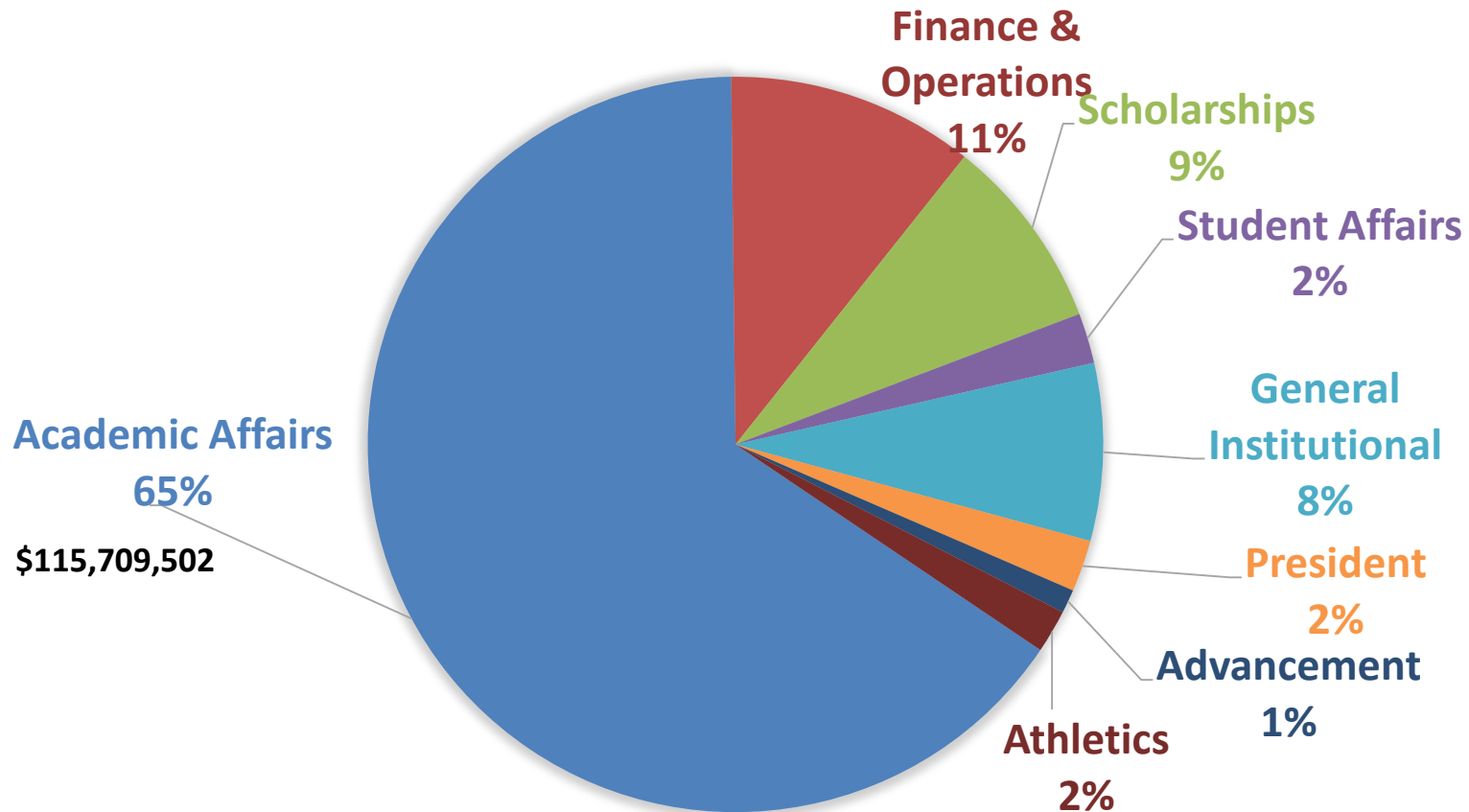
# GEF FY2020 Budget

GEF Budget = \$177,012,053



# GEF FY2020 Budget – Expenses by Division

GEF Budget = \$177,012,053





# AA FY2020 Budget – Expenses by area

Academic Affairs Budget = \$115,709,502

