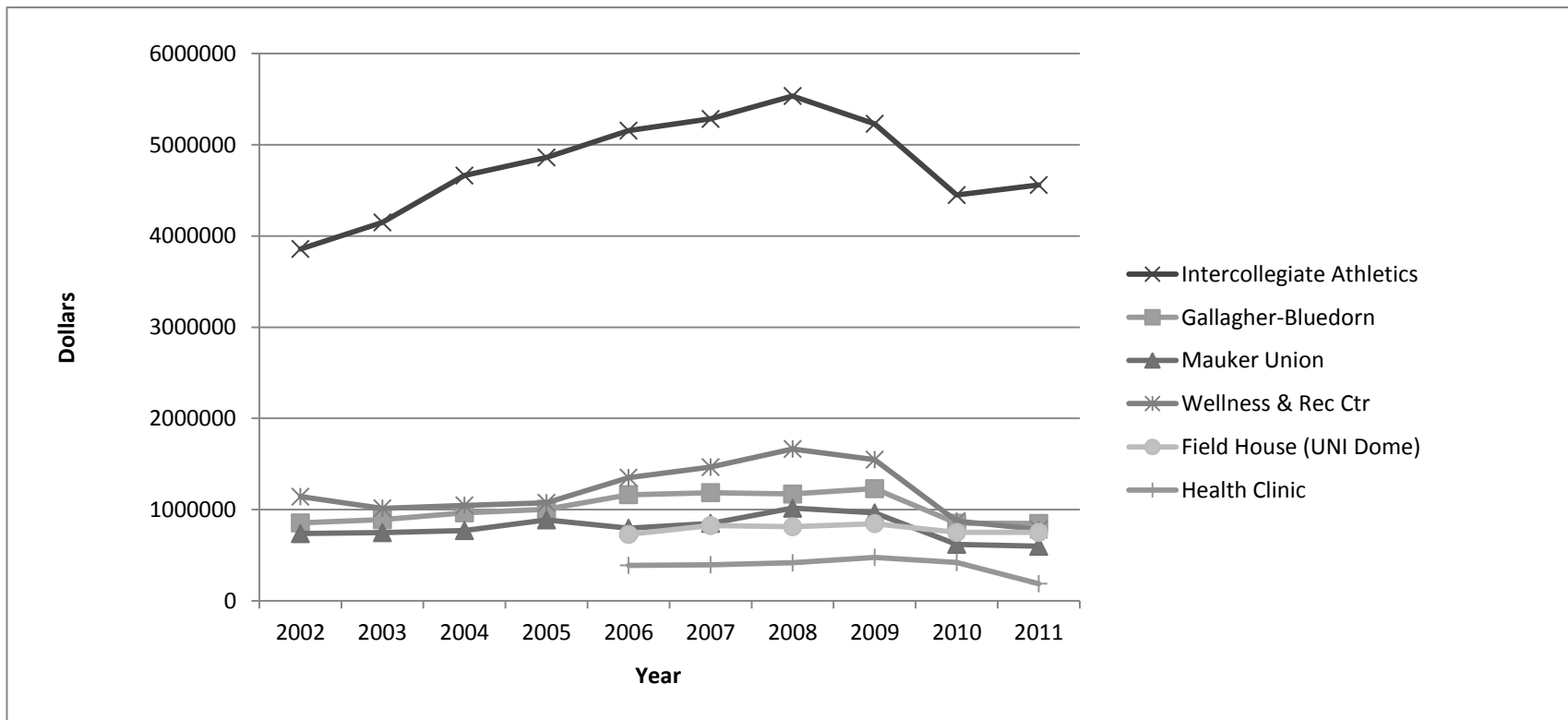
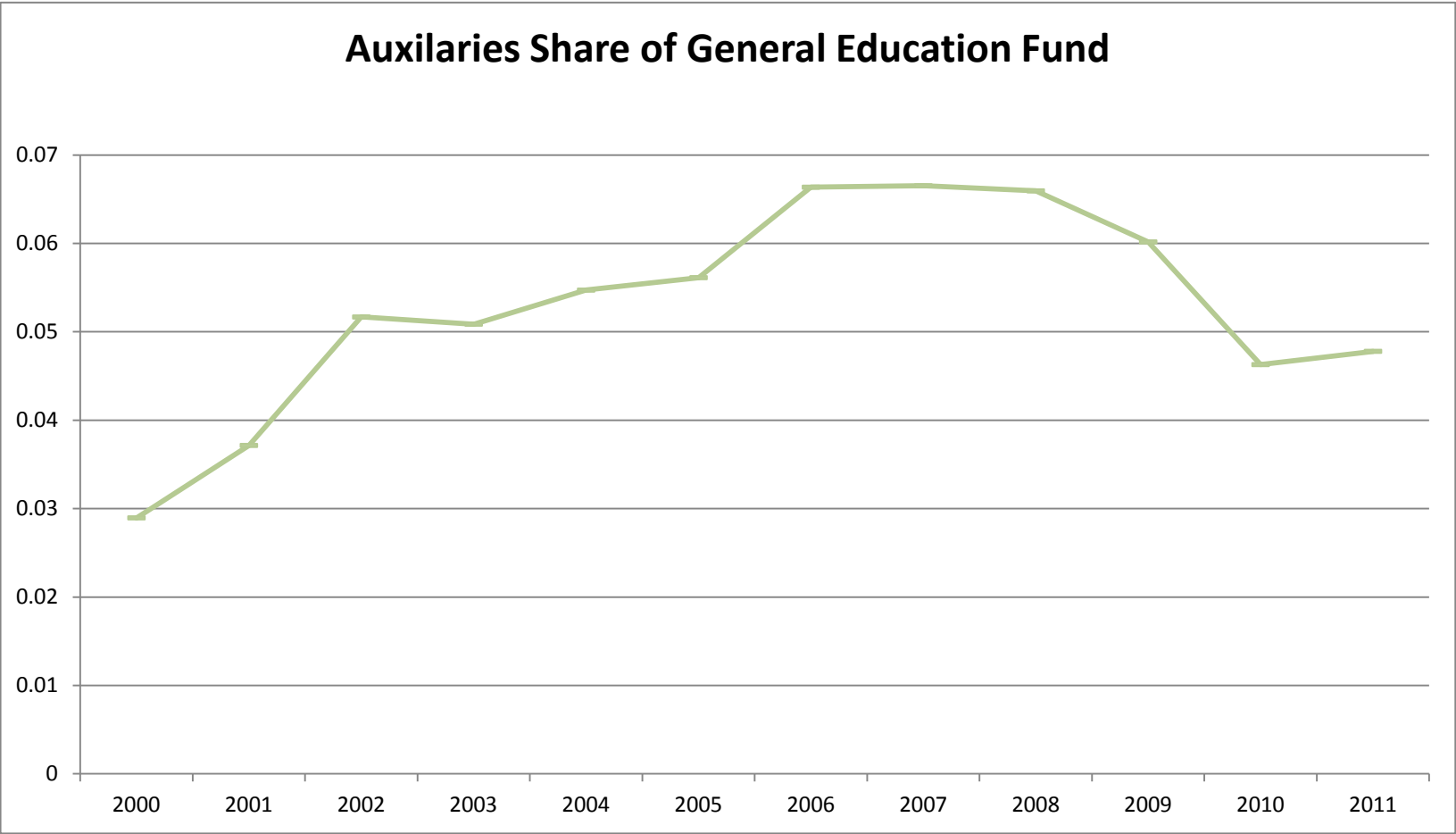


General Education Funds Allocated to Auxiliary Enterprise Operations

Operation	2000	2001	2002	2003	2004	2005	2006	2007	2008	2009
Intercollegiate Athletics	3177904	3572435	3858672	4149209	4662997	4860848	5156086	5284052	5535454	5231210
Gallagher-Bluedorn	634350	799770	854534	889357	964428	1004518	1164205	1186359	1170993	1229806
Mauker Union		757250	737106	748114	770547	887640	796276	849828	1015469	964626
Wellness & Rec Ctr			1142127	1014924	1047405	1075760	1351482	1466051	1665333	1548639
Field House (UNI Dome)							727700	825664	812619	846842
Health Clinic							389040	396058	417201	477523
Total	3814254	5131456	6594441	6803607	7447381	7830771	9586795	10010019	10619077	10300655
Gen Ed Fund	131731452	138131876	127598695	133748611	136101539	139509990	144459454	150468028	161019090	171191968
Aux/GEF	0.0289548	0.037149	0.0516811	0.0508686	0.0547193	0.0561305	0.0663632	0.0665259	0.0659492	0.0601702



Auxilaries Share of General Education Fund



Source: Supplement to the Comprehensive Annual Financial Report, for years stated.

Note: Missing data denotes years in which the source documents report no data.

2010	2011
4449174	4,559,447
851328	848,739
619837	598,286
874692	782,274
750464	750,000
420411	188,213
7967916	7728970
172120594	161,704,799
0.046292636	0.04779679